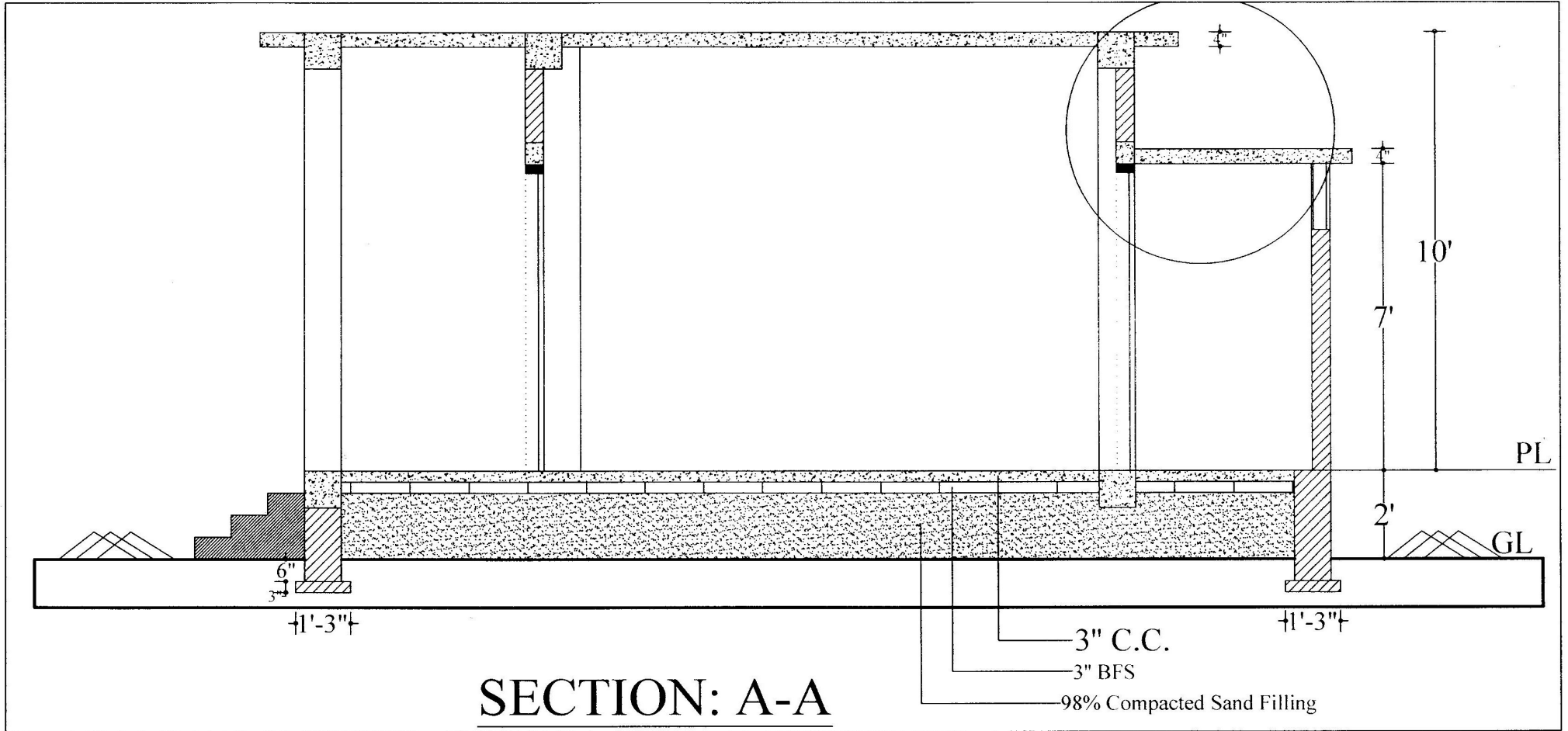
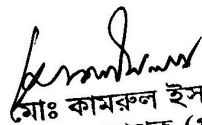

 মোঃ কামরুল ইসলাম
 ব্যবস্থাপক (পুর)
 বি,এস,এফ,আই,সি


LAY OUT PLAN




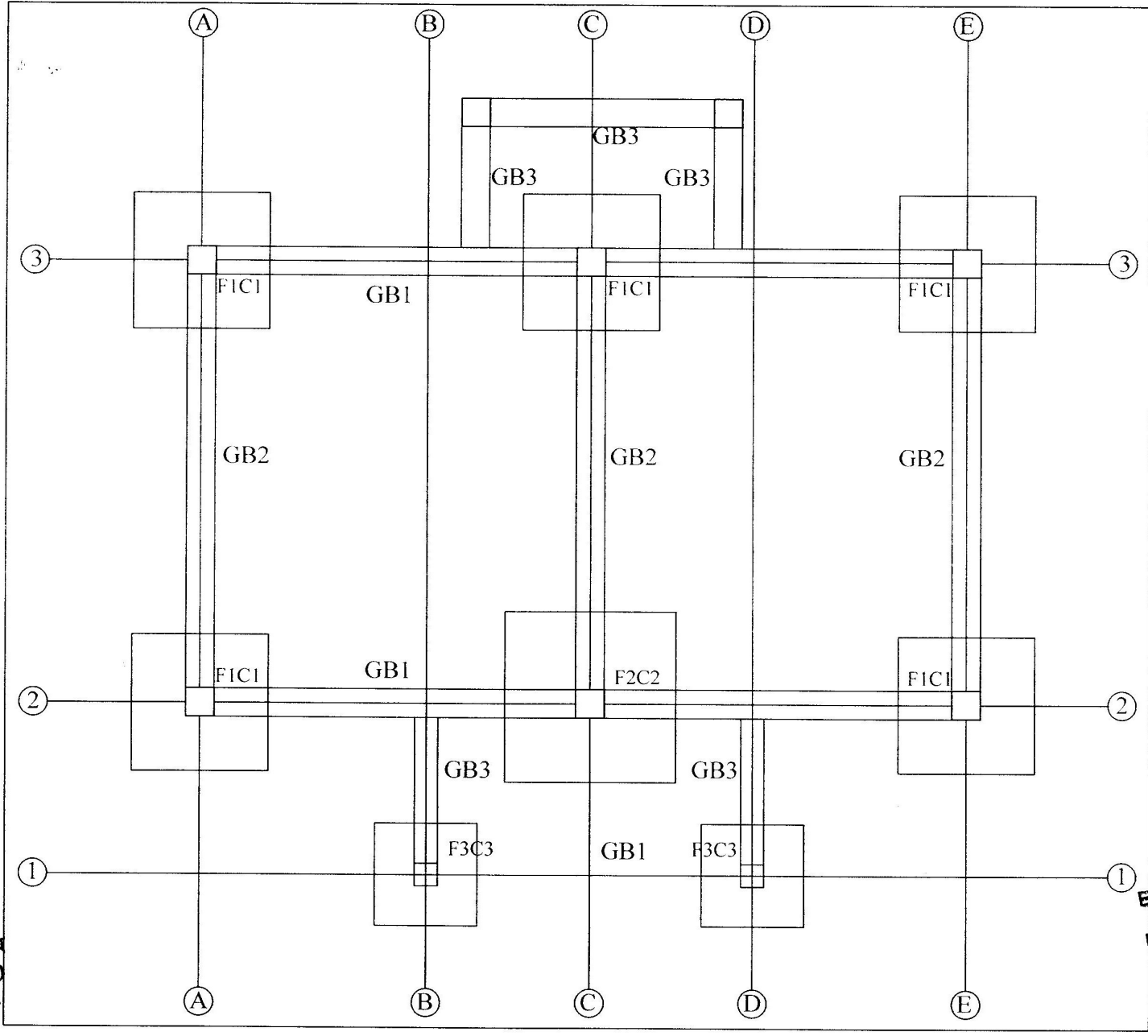
Engr. Md. Shahinul Islam
 B.Sc. Engineer (Civil) MIEB-31045
 Deputy Manager (Civil Engg.)
 Head Office, 3, Dilkusha C/A, Dhaka
 Bangladesh Sugar & Food Industries Corporation

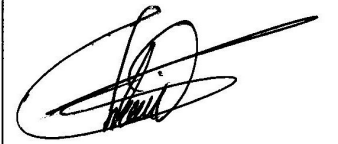



 মোঃ কামরুল ইসলাম
 ব্যবস্থাপক (পুর)
 বি,এস,এফ,আই,সি


 Engr. Md. Shahinul Islam
 B.Sc. Engineer (Civil) MIEB-31045
 Deputy Manager (Civil Engg.)
 Head Office, 3, Dilkusha C/A, Dhaka
 Residential: Surar & Feroz Industries, Rajshahi


 মোঃ কামরুল ইসলাম
 ব্যবস্থাপক (পুর)
 বি,এস,এফ,আই,সি





Engr. Md. Shahinul Islam
 B.Sc. Engineer (Civil) MIEB-31045
 Deputy Manager (Civil Engg.)
 Head Office, 3, Dilkusha C/A, Dhaka
 Bangladesh Sugar & Food Industries Corporation

FOOTING LAY OUT

SCHEDULE OF COLUMN

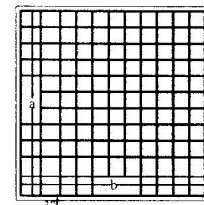
COLUMN TYPE	COLUMN SIZE BELOW GB	COLUMN SIZE ABOVE GB	MAIN REINFORCEMENT
			Ground Floor & 1st Floor
C-1& C-2	12"X12"	10"X10"	<p>10mm\emptyset @ 5"-6"-5" C/C. 4-16mm\emptyset 10"</p>
C-3	10"X10"	8"X8"	<p>10mm\emptyset @ 5"-6"-5" C/C. 4-16mm\emptyset 8"</p>

SCHEDULE OF FOOTING

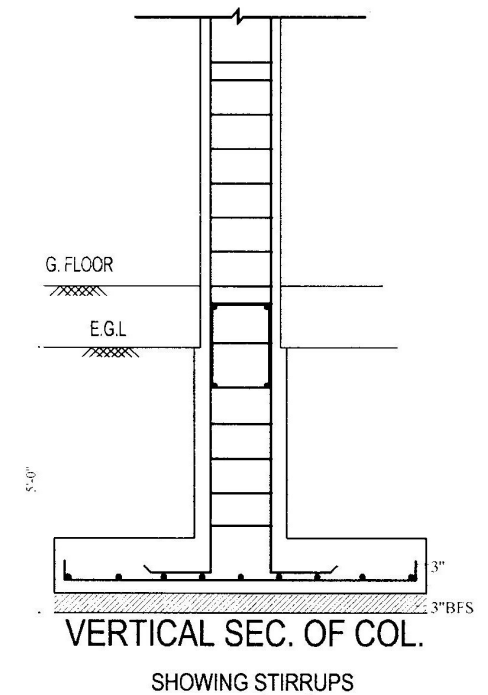
Footing	Size(axb)	T	H	Long(a)	Short(b)
F1	4'-0"x4'-0"	10"	5'-0"	16mm 6" c/c	16mm 6" c/c
F2	5'-0"x5'-0"	10"	5'-0"	16mm 6" c/c	16mm 6" c/c
F3	3'-0"x3'-0"	8"	5'-0"	16mm 6" c/c	16mm 6" c/c

Note :

- 1). Clear Cover 1.5" above grade beam & 2.5" below grade beam
- 2). Reinforcement 60 grade deformed bar ($f_y = 60,000$ psi)
- 3). Casting Ratio = 1:1.5:3 with 3/4" well graded down brick chips ($f_c = 3,000$ psi)
- 4). Sand must be sieved due to avoid impurities



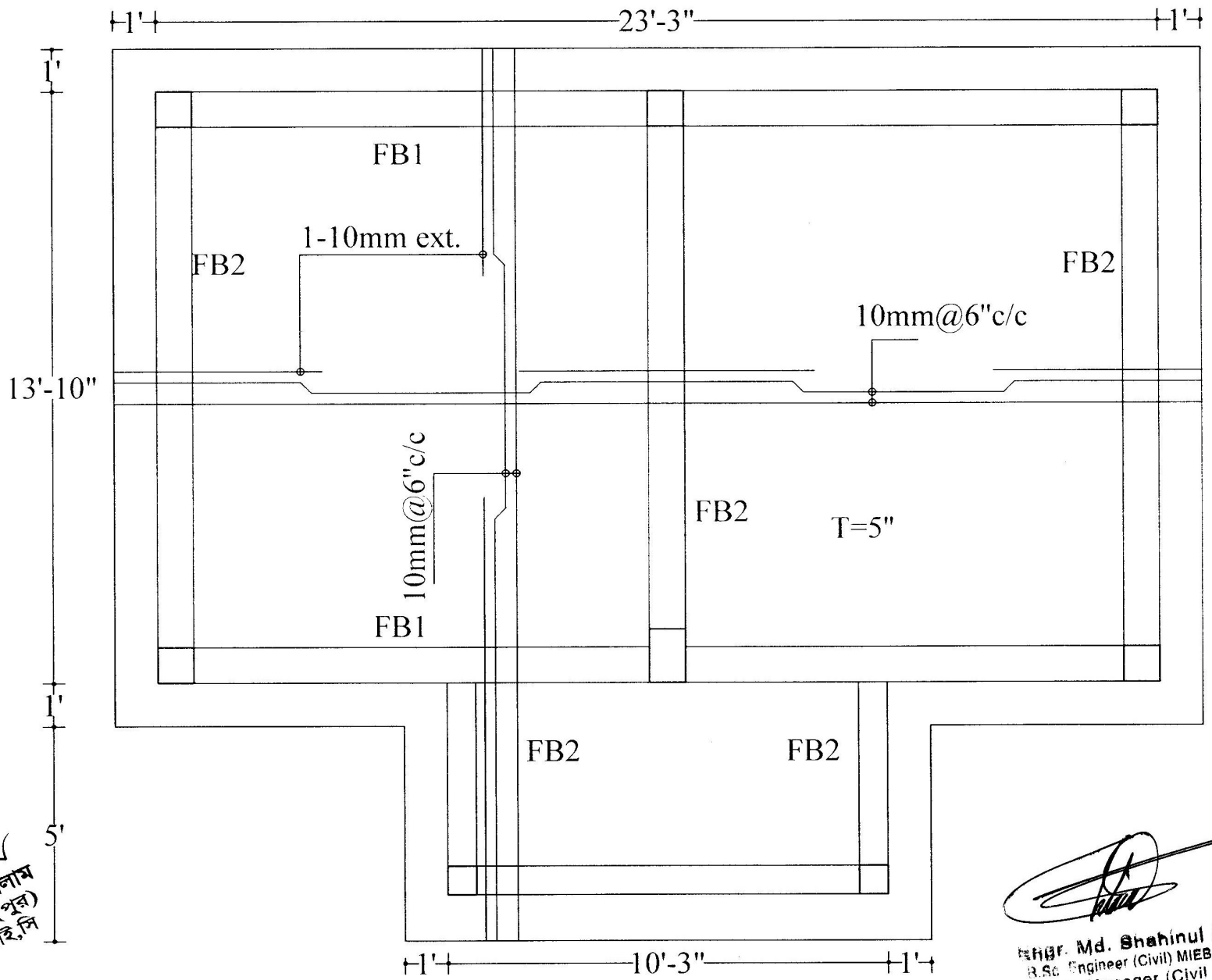
Footing Plan



Engr. Md. Shahinul Islam
মোঃ শাহিনুল ইসলাম
ব্যবস্থাপক (পুর)
বি,এস,এফ,আই,সি

Engr. Md. Shahinul Islam

Engr. Md. Shahinul Islam
B.Sc. Engineer (Civil) MIEB-31045
Deputy Manager (Civil Engg.)
Head Office, 3, Dilkusha C/A, Dhaka
Bangladesh Sugar & Food Industries Corporation



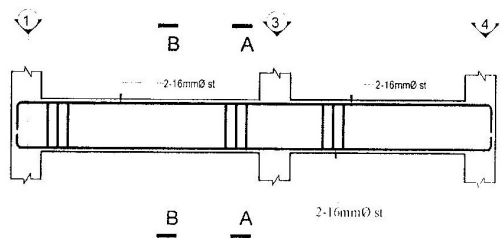
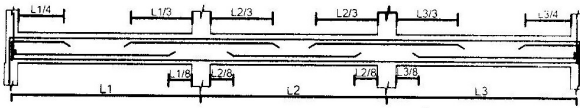
Shahinul Islam
 মোঃ কামরুল ইসলাম
 ব্যবস্থাপক (পুর)
 বি.এস.এফ.আই.সি

Shahinul Islam
 Engr. Md. Shahinul Islam
 B.Sc. Engineer (Civil) MIEB-31045
 Deputy Manager (Civil Engg.)
 Head Office: S. Dilkusha C/A, Dhaka
 Bangladesh Sugar & Feed Industries Corporation

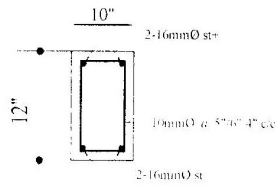
SLAB REINFORCEMENT DETAIL

GRADE BEAM & FLOOR BEAM REINFORCEMENT DETAILS

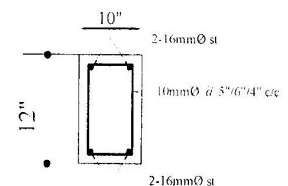
Bar Cutoff and Bend Points



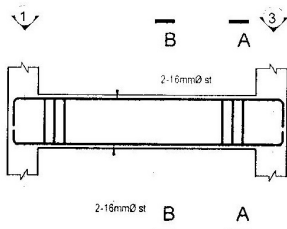
LONG SECTION GB-1(10"x12")



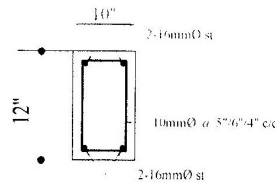
SEC. NO A-A



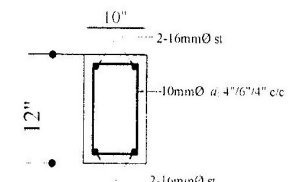
SEC. NO B-B



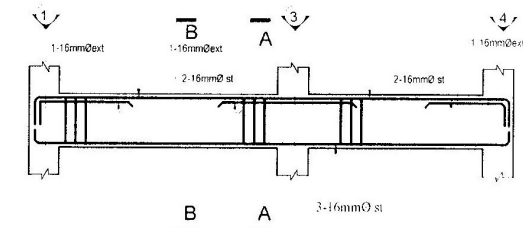
LONG SECTION GB-2(10"x12")



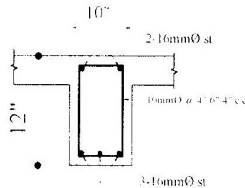
SEC. NO A-A



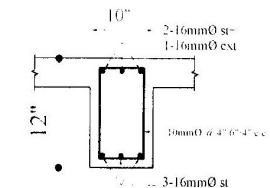
SEC. NO B-B



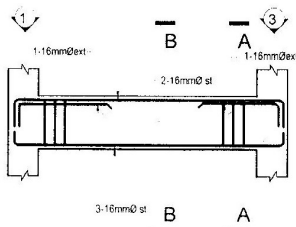
LONG SECTION FB1(12"x10")



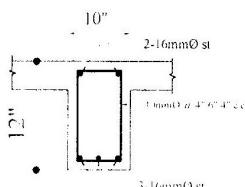
SECTION B-B



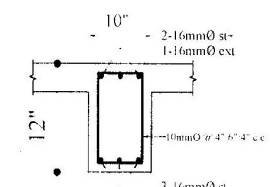
SECTION A-A



LONG SECTION FB-2(10"x12")



SECTION B-B



SECTION A-A

Engr. Md. Shahinul Islam
 মোঃ শাহিনুল ইসলাম
 ব্যবস্থাপক (পুর)
 বি.এস.এফ.আই.সি

Engr. Md. Shahinul Islam

Engr. Md. Shahinul Islam
 B.Sc. Engineer (Civil) MIEB-31045
 Deputy Manager (Civil Engg.)
 Head Office, 3, Dilkusha C/A, Dhaka
 Bangladesh Sugar & Food Industries Corporation